

No, Not Every Time!

OMNICHROMA BLOCKER: Myths Debunked

OMNICHROMA composites' seamless shade-matching relies on pulling color from the tooth structure it is bonded to.

Sometimes, it is helpful to use the supplemental opaquer, **OMNICHROMA BLOCKER**, for ensuring an optimal shade-match in the three specific cases listed below. It is available in two viscosities: BLOCKER (paste) and BLOCKER *Flow* (flowable).

1
MYTH

“BLOCKER is always needed for a good shade match”

False! BLOCKER is only needed in 3 scenarios:

- 1) Covering stains and discoloration
- 2) Preventing translucency when tooth structure is missing (ex. Class III or IV)
- 3) Masking dark dentin

2
MYTH

“It is complicated to use BLOCKER properly”

False! Like any other opaquing material, simply bond, apply, and light cure.

3
MYTH

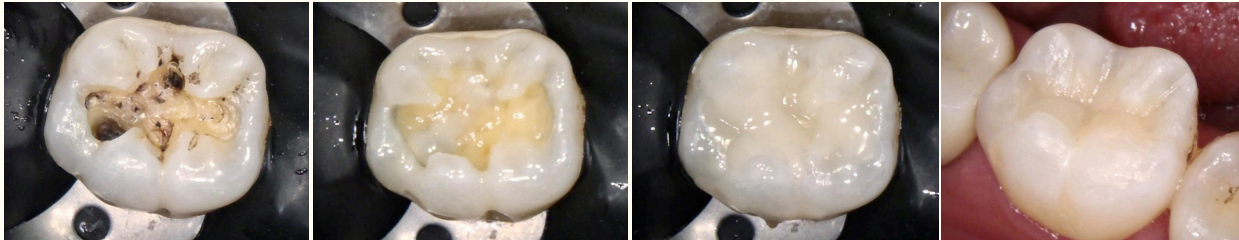
“BLOCKER can be placed in any thickness”

True, but 0.5 - 1 mm is the recommended thickness, just enough to mask the stain or darkness. OMNICHROMA is what shade-matches to the tooth.

3 BLOCKER Uses

1) Covering amalgam stains and discoloration

Courtesy of Dr. James Chae



Amalgam staining

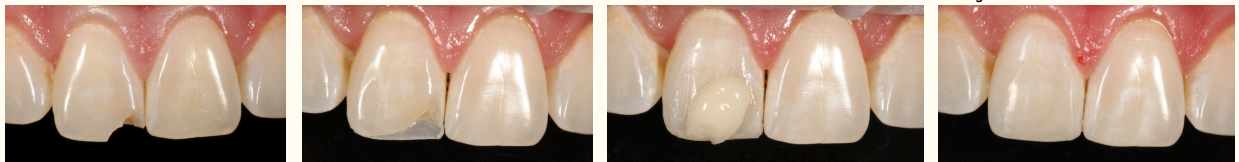
OMNICHROMA
BLOCKER placed and
cured to mask
discoloration

Remaining
restoration filled
with OMNICHROMA
Flow

Finished and polished

2) Preventing translucency when tooth structure is missing

Courtesy of Dr. Kevin Brown



Incisal edge chip

Lingual shelf of
OMNICHROMA
BLOCKER

OMNICHROMA filled
remainder of
restoration

Finished and polished

3) Masking dark dentin

Courtesy of Dr. Mike Malone



Class V with dark
dentin

Tooth
prepped

Layer of
OMNICHROMA
BLOCKER applied
and cured

OMNICHROMA *Flow*
added, finished, and
polished



For more info on
OMNICHROMA BLOCKER
Scan the QR code